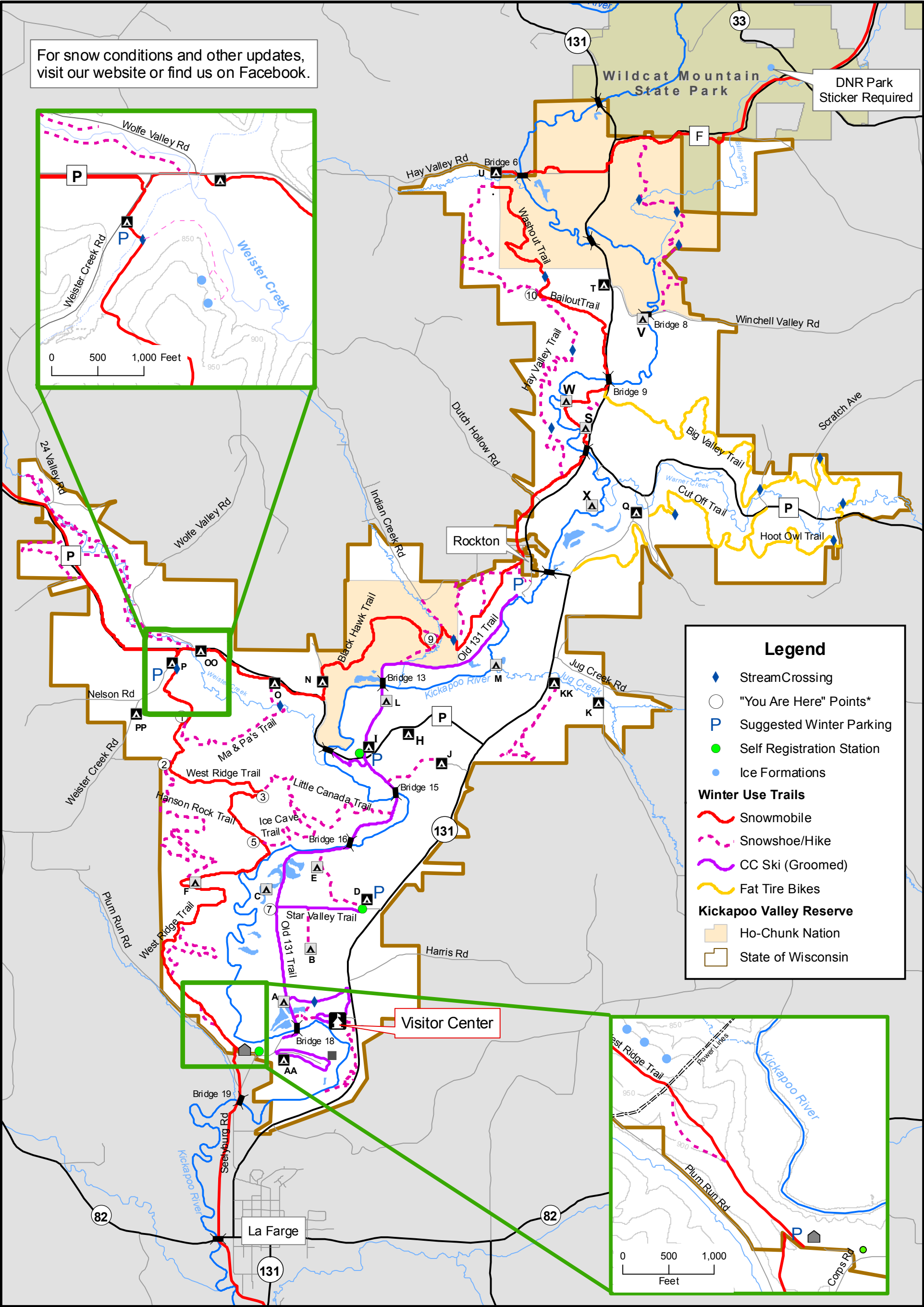


Kickapoo Valley Reserve

Winter Trails



* "You Are Here" Points correlate to markers at trail intersections.
** The KVR does not have groomed snowshoe trails. Snow shoes are welcome throughout the property, but please do not use the snowmobile trail, nor tred on CC Ski tracks. Do not walk, ski, or snowmobile on Kickapoo River or streams. Take Nothing but Pictures, Leave Nothing but Footprints

Digitized Lines Are Not Survey Quality
Revised: February 2020
Note: The Kickapoo Valley Reserve is not part of WI DNR Park System. DNR Park vehicle stickers and trail passes do not apply for KVR use.