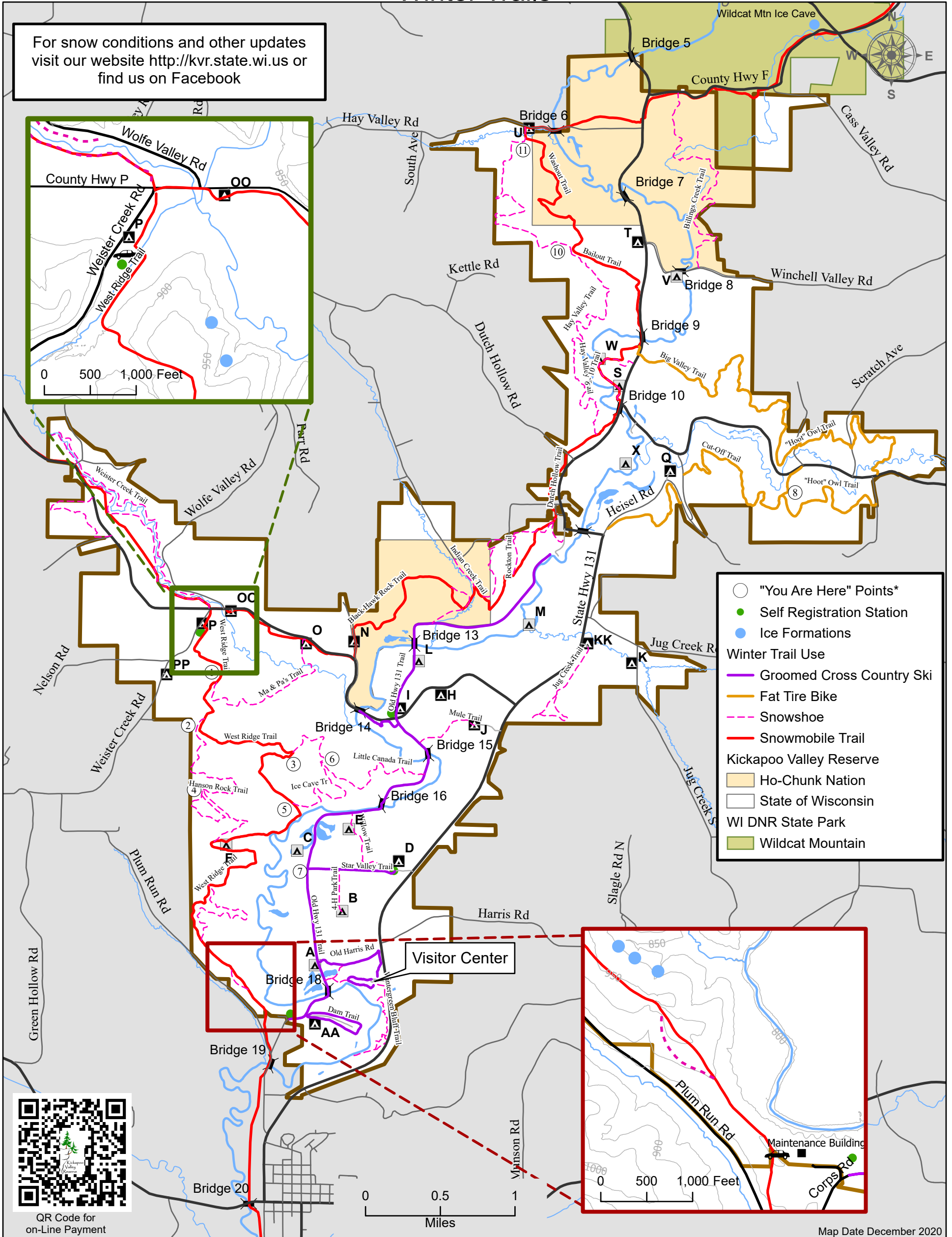


# Kickapoo Valley Reserve Winter Trails



**Trail Use Permits:**

- Day Use/Person x \$5
- Day Use/Family x \$15
- Annual/Person x \$20
- Annual/Person x \$35

**Camping (does not include trail use)**

- Non-Vehicle access Sites x \$10/night
- Vehicle Access Sites x \$15/Night
- Campsite Capacity 10 people

**River Access Parking Only: \$5/vehicle/day**

"You are here Points" refer to markers at trail intersections. Snowshoes and Cross Country skis are welcome off trail. Please do not walk on Cross Country Ski tracks. Only fools (and those who follow fools) walk, ski, or snowmobile on a deceptively frozen Kickapoo River or streams.

**Take Nothing but Pictures, Leave Nothing but Footprints.**

Plowed Parking areas include KVR Visitor Center, Willow Camp (D), Old 131 Trail @ CTH P, Maintenance Building and Campsite P @ Weister Creek Rd. Trails and Campsites are not cleared for winter use.

Note: The Kickapoo Valley Reserve is separate from the WI DNR Park system. Thus KVR trail passes and DNR Park stickers are specific to each respective property.